

Success Story

Gull Lake Sewer & Water

Gull Lake Sewer
& Water Authority

7722
glswa.org
731-4480

mPower's Integrator™ software helps a water utility connect all of their systems and data

— Project Summary —

Existing Mapping Platform

- ESRI Arc Map and Arc Reader
- Maintained by local engineering firm, Prein & Nuhoff

Available Map Layers

- County & Township Parcels Maps and Aerials
- Water & Sewer Systems Maps (.shp files)

Integrated Systems

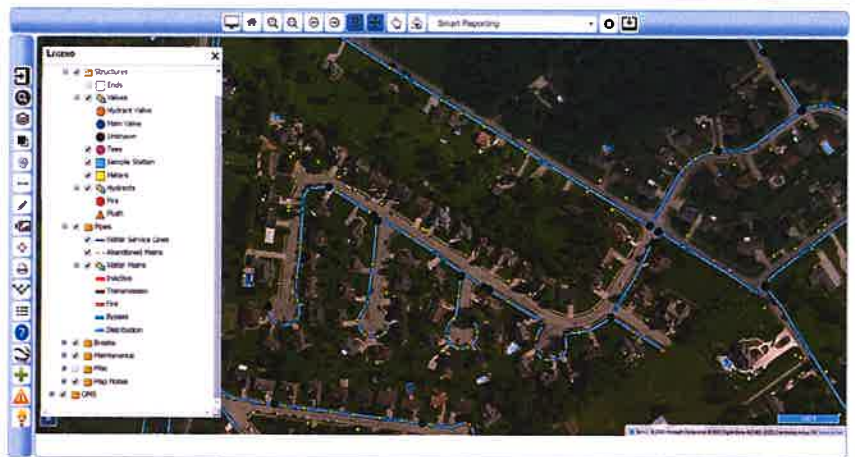
- Springbook CIS
- SQL Asset Database
- mPower WMS (Work Management System)
- Scanned Images
- Manhole Photos

Search and Reporting Ability with Integrator Installation

- Billing / Payment History
- Zoom to Address / Location
- Link from Map to scanned Documents, Permits, Customer Correspondence Easements & System Connections

Implementation Timeline

- January, 2011 Deployment
- February, 2011 Installation Complete and Running



Before working with mPower, Gull Lake Sewer & Water Authority (GLSWA) spent significant time and money on a GIS system that they described as cumbersome and disconnected. Integrator™ gave them the ability to link all of their software and systems. Later, GLSWA implemented and integrated mPower WMS to efficiently track and manage their work orders and ongoing projects.

"We knew we needed to allow controlled access to various systems and data types including our billing, asset management, maintenance and work order systems as well as property information including documents, easements, correspondence, and project files just to name a few.

After participating in a webinar and hearing that mPower's Integrator™ could connect to and access all of our systems and files without excessive integration costs or additional desktop licenses we decided to move forward. mPower's Integrator™ has done all that they said it could, allowing swift accessibility to all our programs, data and files. Their support staff has met each of our challenges thus far. We are very pleased."

John Crumb, Executive Director